

PART OF S.E. 1/4 OF SEC. 15, T5N, R1W, S.L.B. & M.
SHADOW VALLEY ESTATES NO. 5

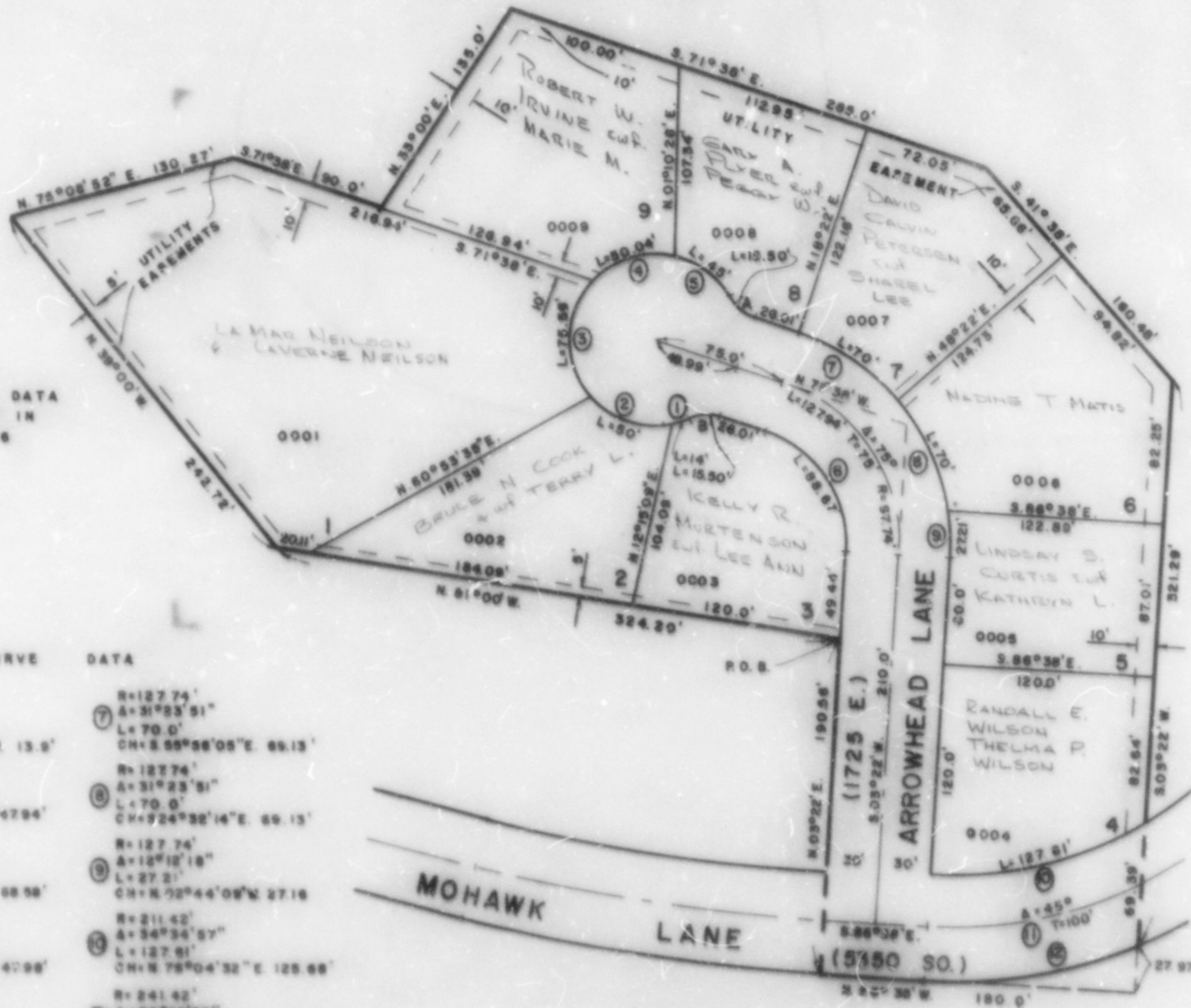
138

TAXING UNIT 25

IN OGDEN CITY
 SCALE 1"=60'

PREFIX 07-138

SEE PAGE 258



NOTE
 FOR COMPLETE ENG. DATA
 SEE ORIG. DED. PLAT IN
 BOOK 16, PAGE 88

SEE PAGE 7

CURVE DATA

| | |
|---|--|
| ① R=50.0' A=18°02'34" L=14.0' CH=S 71°58'22"W 13.5' | ⑦ R=127.74' A=31°23'51" L=70.0' CH=S 55°58'05"E 65.13' |
| ② R=50.0' A=57°17'45" L=50.04' CH=N 71°21'29"W 47.94' | ⑧ R=127.74' A=31°23'51" L=70.0' CH=S 24°52'14"E 69.13' |
| ③ R=50.0' A=24°34'56" L=75.56' CH=N 00°34'52"E 68.58' | ⑨ R=127.74' A=12°12'18" L=27.21' CH=N 72°44'08"W 27.18' |
| ④ R=50.0' A=57°20'37" L=50.04' CH=N 72°32'36"E 47.98' | ⑩ R=241.42' A=29°48'20" L=128.89' CH=S 55°00'04"E 45.50' |
| ⑤ R=50.0' A=51°38'58" L=45.0' CH=S 55°00'04"E 45.50' | ⑪ R=271.42' A=28°14'51" L=124.30' CH=N 50°14'50"E 162.52' |
| ⑥ R=57.74' A=75°00'00" L=88.57' CH=N 54°08'00"W 89.48' | ⑫ R=20.0' A=44°24'50" L=15.50' CH=S 55°08'55"W 15.12' |
| ⑬ R=20.0' A=44°24'55" L=15.50' CH=N 05°28'35"W 15.12' | |

SEE PAGE 7